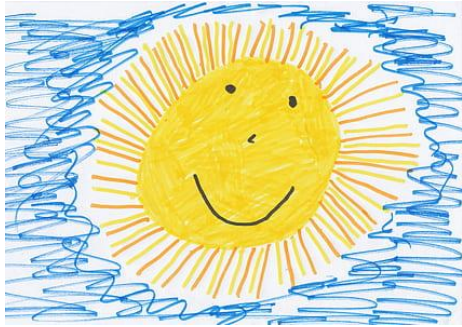




Kindergarten Back to School Night Sept. 21, 2020



Kindergarten Schedule

Related Arts: Tuesday/Friday
Content: Monday/Thursday

CCES Kindergarten Weekly Schedule

Time	Monday	Tuesday	Wednesday	Thursday	Friday	
9:00-9:15	SEL - 9:00 - 9:15 a.m.		 <p>Asynchronous Assignments (3 hrs): LexiaCore (15-20 min) Math Task (30 min) Health (30-45 min) Rel Arts #1 (30 min) Rel Arts #2 (30 min) Rel Arts #3 (30 min)</p> <p>Possible Activities: Strings (30 min) GT Seminar (30 min)</p> <p>Small group supports could include (pm only): Reading Intervention Math Intervention ESOL Special Education</p> 	SEL - 9:00 - 9:15 a.m.		
9:15- 10:15	Math 9:15-10:15	Math 9:15-10:15		Math 9:15-10:15	Math 9:15-10:15	
10:25-11:15	Synch. Supports 10:25 - 11:15	Synch. Supports 10:25 - 11:15		Synch. Supports 10:25 - 11:15	Synch. Supports 10:25 - 11:15	
11:20-11:50	Lunch - 11:20 - 11:50			Lunch - 11:20 - 11:50		
11:50-12:45	Asynchronous assignments, Lexia Core, DreamBox - 11:50 - 12:45			Asynchronous assignments, Lexia Core, DreamBox - 11:50 - 12:45		
12:45-1:45	ELA 12:45 - 1:45	ELA 12:45 - 1:45		ELA 12:45 - 1:45	ELA 12:45 - 1:45	
1:50-2:40	Content	Rotating Schedule for		Content could include (pm only): Reading Intervention Math Intervention ESOL Special Education	Content	Rotating Schedule for
	Science,	Related Arts			Science,	Related Arts
	Social Studies, or	1:50 - 2:40			Social Studies, or	1:50 - 2:40
	Health		Health			
2:50-3:40	Asynchronous assignments, Lexia Core, DreamBox 2:50-3:40	Asynchronous assignments, Lexia Core, DreamBox 2:50-3:40	Asynchronous assignments, Lexia Core, DreamBox 2:50-3:40	Asynchronous assignments, Lexia Core, DreamBox 2:50-3:40		

Building Stamina/ Whole Class Instruction/small groups

- All join for SEL, Math, ELA, Content, Related Arts
- Gradually increasing time during each subject to build stamina

Synch Support Time (10:25-11:15AM) invite only, teacher will contact students/ parents

Synch Support Time used for:

- Individual assessments
- small group instruction
- extra support for students

Canvas Updates



Google meet times and links available on the canvas calendar

- Students/parents can use the calendar to access meets with direct link
- Google meets can still be accessed with your class google meet code by going to: hcpss.me select google meet, enter class code to join
-
- Canvas Dashboard/ Subject Areas
- Week 1 (9/8): Language Arts and Math
- Week 2 (9/14): Science
- Week 5 (10/5): Health (asynchronous Q1)
- Week 6 (10/12): Social Studies
- Week 6 (10/12) Asynchronous Writing/ Journals (LA)

Creating a Healthy Learning Environment

- Reassure your student(s) that although this learning at home experience is new for everyone, and that we are here to support them and help them be successful.
- Limit distractions (other devices) and create a space for completing school work that is separate from where eating and play occur, as much as possible.
- Work together to create a space that is comfortable, quiet, and dedicated to learning during instructional time.

Supporting Young Learners

Create a daily schedule that includes time for:

- Routines for getting outside and moving during breaks (recess);
- Taking “brain breaks” from instructional tasks;
- When possible, balance screen time for learning with other resources such as books, printed materials, games, and free play

Materials Used for Instruction and Asynchronous Tasks

2 Journals

- Content: Science, Social Studies, Health
- Writing

Resource Packets:

Digit Cards 0-9, Subitizing Cards, dots/ten frames,

Ten Frame Mat, Ten Frames , Domino Cards , 0-50 chart

Poetry Journal, Handwriting Booklet, Letter Alphabet Chart,

Language Arts - Synchronous Lessons

Whole group language arts instruction 4 days a week, that will include:

- Direct instruction of the reading and writing standards through modeled lesson and interactive read alouds;
- Differentiated small group instruction (which will occur each day during the ELA time, as well as the additional synchronous time for some reading groups).

Supports for reading instruction are available on the [HCPSS Family and Community Resource pages](#)

Kindergarten Mathematics: Synchronous Lessons

- Whole group instruction 60 minutes each, 4 days a week
- Standards-based instruction centered on big ideas including
 - Number relationships (counting and comparing)
 - Addition/subtraction
 - Problem solving
- Small group instruction will be part of this time as needed
- For more information about mathematics visit <https://www.hcpss.org/academics/mathematics/>

Kindergarten: Science Expectations

- There are four units of instruction
 - Q1 - Scientists and Engineers
 - Q2 - Weather
 - Q3 - Pushes and Pulls
 - Q4 - Relationships in Ecosystems
- For HCPSS Science information, visit:
<https://www.hcpss.org/academics/elementary-science/>
- For more information about the Next Generation Science Standards, visit: <https://www.nextgenscience.org/parentguides>

Kindergarten: Science Virtual Learning Materials

- Students will be using a Science Journal with every lesson
- Some lessons may ask students to go outdoors for an asynchronous task. **They are ALWAYS told to receive adult permission before going outdoors.** *There are also resources given, which they can use to complete the task if not able to go outdoors.*
- Some lessons will require students to gather household items for use, such as: *blocks, legos, cardboard boxes, recyclable items, paper towel tubes, etc.*

Kindergarten - Health Education Virtual Learning

- There are four units of instruction:
 - Q1 - Social & Emotional Health
 - Instruction will be all asynchronous tasks in Q1
 - Q2 - Safety & Injury Prevention
 - Two synchronous lessons in Q2, with additional asynchronous tasks
 - Q3 - Disease Prevention
 - Q4 - Nutrition
- Students will be using a Health Journal in most lessons
- For more information about the HCPSS Health Curriculum, visit:

<https://www.hcpss.org/academics/health-education/>

Social Studies Expectations

- There are four units of instruction in each quarter.

Kindergarten	Home and School	It's a Busy World	My Country Tis of Thee	Maps and Me
1st Grade	Working Together	Our World of Cultures	Communities at Work	Our Changing World
2nd Grade	Comparing Communities	People and the Environment	Let's go Shopping	Citizens in a Community
3rd Grade	Communities Change	Location Matters	Our Relationship with the World	Project Citizen
4th Grade	The First People	Early Settlements	Colonial Life	Maryland and Business
5th Grade	American Revolution	Building a New Nation	Challenges of a New Nation	We The People

- For more details on the main concepts of each quarter, go to:

<https://tinyurl.com/2020-SocSt-Matrix>

Determining the Grade

- Quarter grade will be determined by percentage of points earned.
- Assignments will be based on points.
- One grade will be given for each content (ELA, math, science, social studies)
- Learning behaviors will not be reported on the report card, during virtual instruction.

I	67% - 100%
W	34% - 66%
N	0% - 33%

Grades

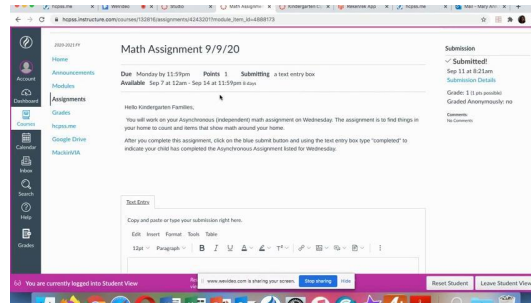
Points earned for:

- ❑ All assignments
- ❑ Dreambox 5 points weekly for daily practice (75 minutes weekly)
- ❑ Lexia Core
 - ❑ 3 = 100-70 minutes per week
 - ❑ 2 = 69 – 20 minutes per week
 - ❑ 1 = 19 – 0 minutes per week
- ❑ In class observations/ sharing journals when assigned and participation in sharing assigned items (example: bring a book to read for “read to self”, bring a math object to share)

Assignments

Assignments are posted Mondays (after lessons have been taught) and due the following Monday to allow for flexibility in work completion.

- Modules review the lesson taught that week
- Allows students to go back and revisit ideas and review if absent
- After completing the Asynchronous task students must submit “completed” if the module has a blue completion button. *Video below shows example for math assignment but can be used for submitting any assignment.*



Attendance Procedures

Attendance is taken 2 times daily during google meets:

Monday, Tuesday, Thursday, Friday

- AM during SEL, and Math
- PM during Language Arts

Wednesday attendance based upon submitting required assignments

If your child is absent from meet please let teacher know via email and also send to email below:

CCEsabsence@hcpss.org

5:00PM Parent Alert notifying parents of absence



Teacher Contact/ Communication Mrs. McCue

Email: mary_ann_mccue@hcpss.org

School Phone: 410-313-6866

Canvas Inbox Message (found on canvas pages on left hand side, gray tool bar)

- Parents/ students can send messages, video clips, and attached photos of work.

Canvas Announcements

- To check past announcements go to canvas pages and click on “Announcements” on left side of page